

# MTC, Inc.

## PRODUCT SPECIFICATION FOR INFORMATION

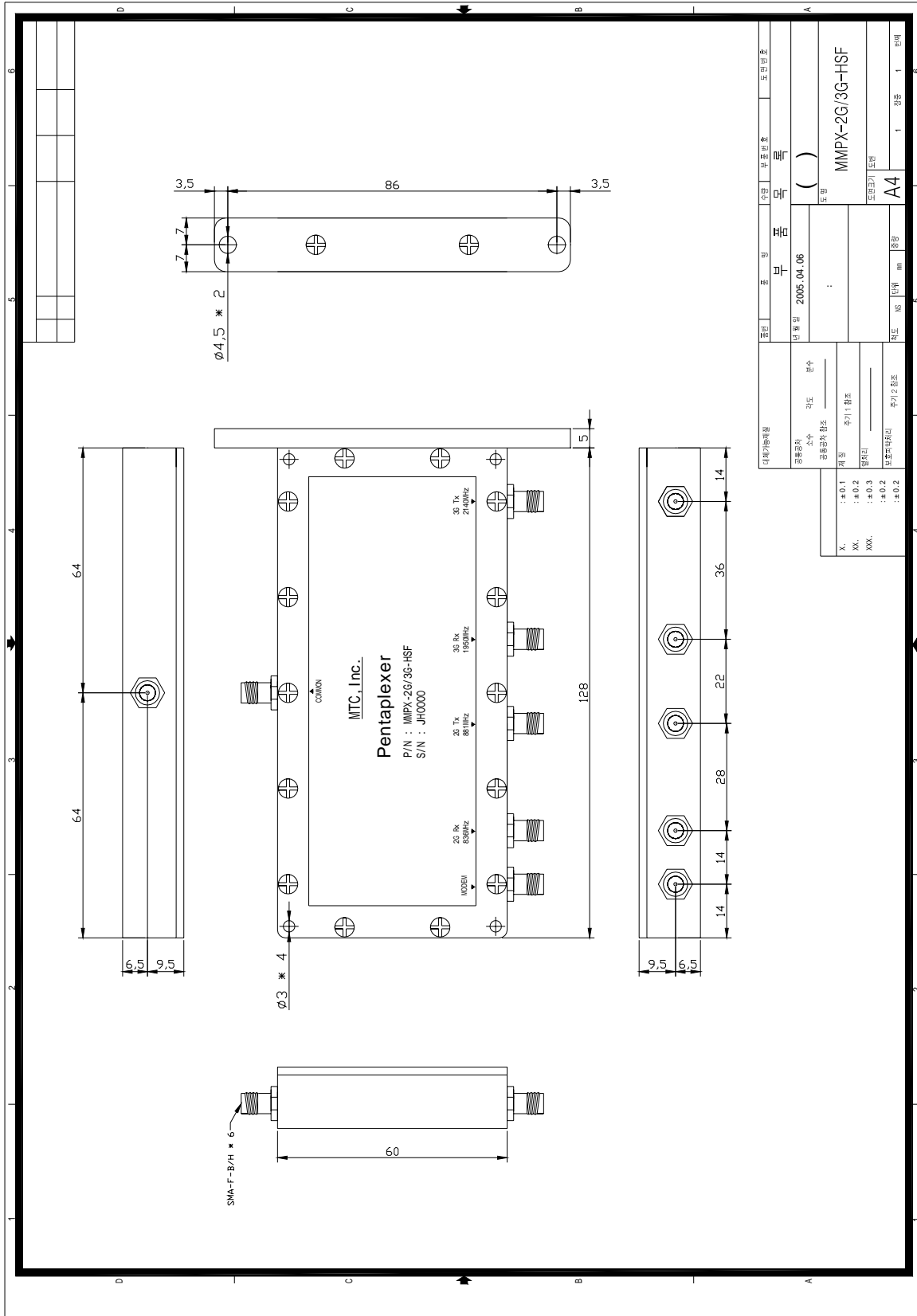
CUSTOMER :

PART NO : MMPX-2G/3G-HSF

ITEM	PARAMENT		
Center Frequency	350 MHz	836MHz	881MHz
Pass Band	320MHz~350MHz	25MHz	25MHz
Insertion Loss	1.5dB max	2.5dB max.	2.5dB max.
Ripple	0.4dB max.	0.8dB max.	0.8dB max.
Return Loss	15dB min.	17dB min.	17dB min.
Attenuation	60 dB min. @ 824~849 MHz 60 dB min. @ 869~894 MHz 60 dB min. @ 1940~1960 MHz 60 dB min. @ 2130~2150 MHz	57dB min. @ 320~350 MHz 55 dB min. @ 869~894 MHz 60 dB min. @ 1940~1960 MHz 60 dB min. @ 2130~2150 MHz 15 dB min. @ 859 MHz	57dB min. @ 320~350 MHz 55 dB min. @ 869~894 MHz 60 dB min. @ 1940~1960 MHz 60 dB min. @ 2130~2150 MHz 15 dB min. @ 859 MHz
In/Out Impedance	50		
Operating Temp	- 10 to +70		
Input Power	3W max.		

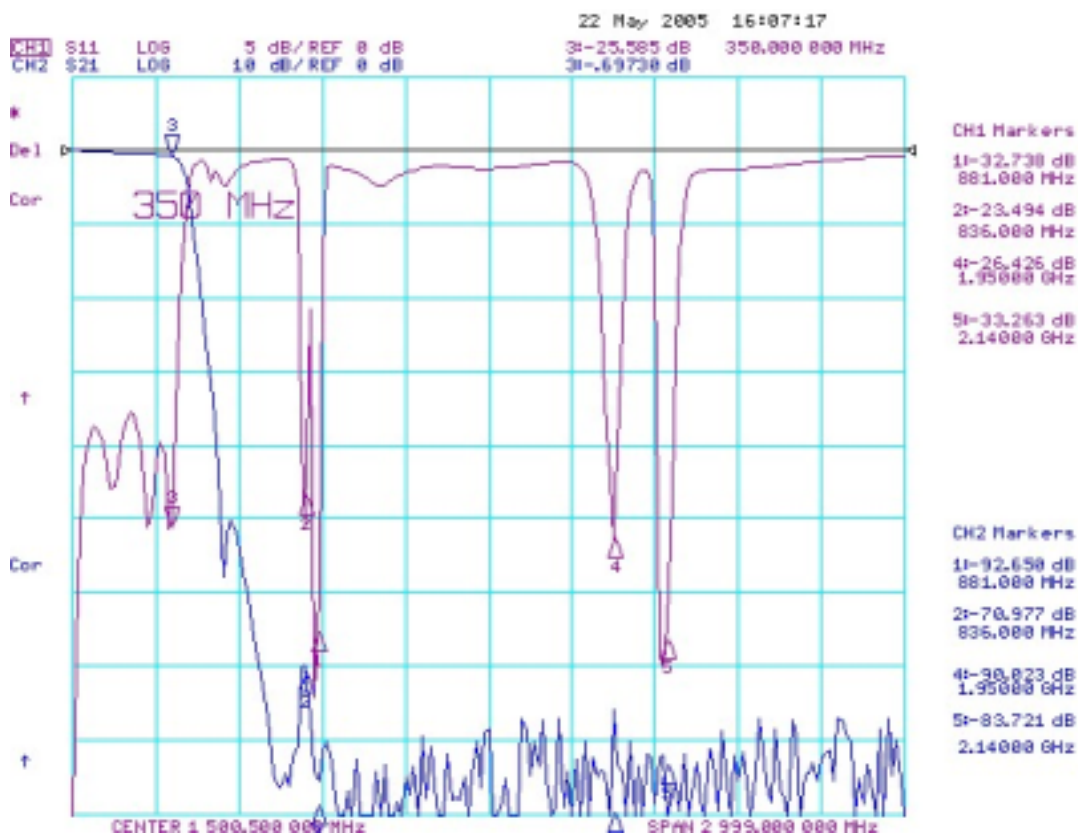
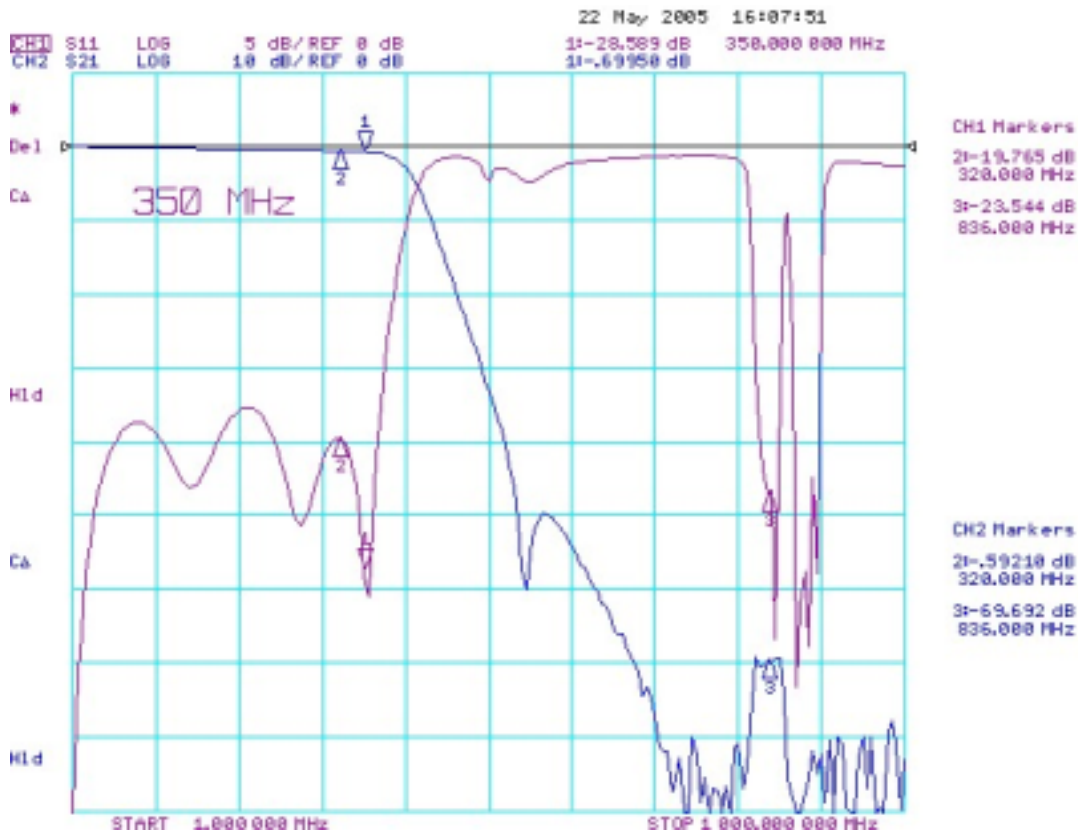
ITEM	PARAMENT	
Center Frequency	1950MHz	2140MHz
Pass Band	20MHz	20MHz
Insertion Loss	2.0dB max.	2.2dB max.
Ripple	0.3dB max.	0.3dB max.
Return Loss	17dB min.	17dB min.
Attenuation	60dB min. @ 320~350 MHz 60 dB min. @ 869~894 MHz 60 dB min. @ 1940~1960 MHz 60 dB min. @ 2130~2150 MHz	60dB min. @ 320~350 MHz 60 dB min. @ 869~894 MHz 60 dB min. @ 1940~1960 MHz 60 dB min. @ 1940~1960 MHz
In/Out Impedance	50	
Operating Temp	- 10 to +70	
Input Power	3W max.	

# DIMENSION



제품명	모델명	수량	단위	입력	출력	제조일자	제조업체
년월일	2005.04.06	( )	개				
제품명	MMPX-2G/3G-HSF						
도면크기	A4						
수량	1	단위	개	입력	출력	1	단위
제조일자							
제조업체							
주요/중요							
주요/중요							
주요/중요							
주요/중요							

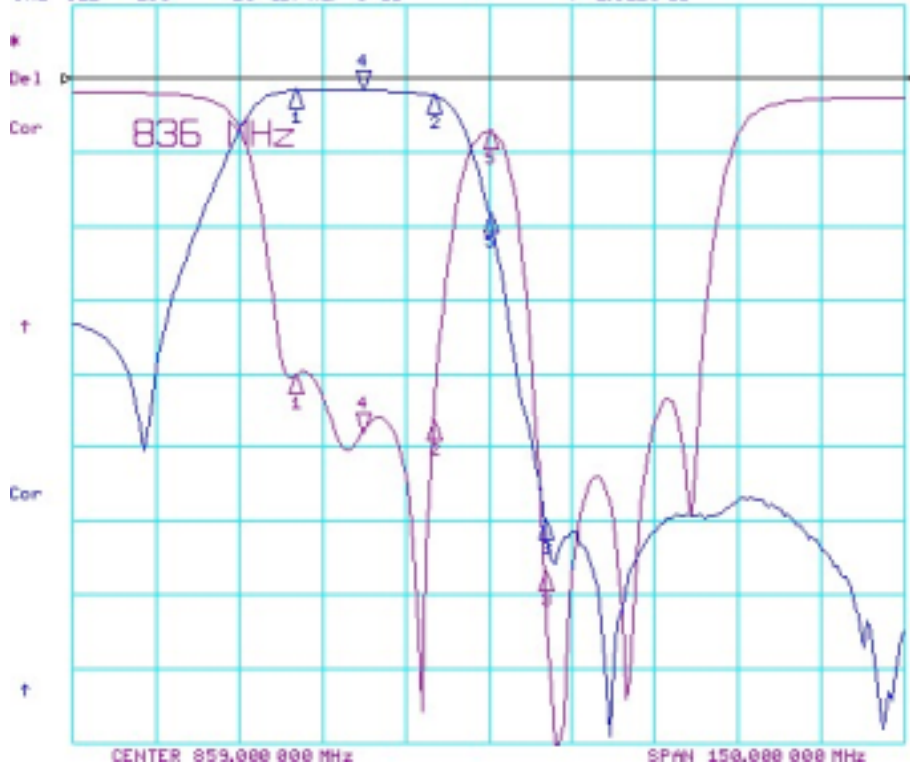
# 1. 350MHz



# 2. 836MHz

22 May 2005 16:02:39

CH1 S11 L06 5 dB/REF 0 dB 41-24.049 dB 836.000 800 MHz  
 CH2 S21 L06 10 dB/REF 0 dB 41-1.6118 dB



CH1 Markers

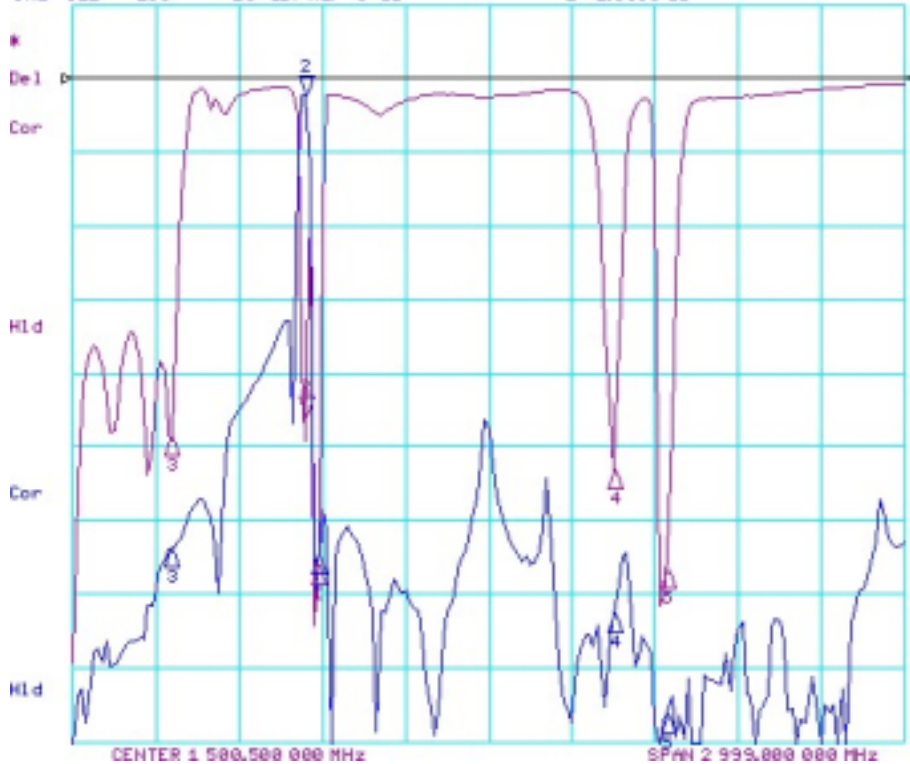
- 1-20.100 dB  
824.000 MHz
- 2-23.257 dB  
849.000 MHz
- 3-33.489 dB  
863.000 MHz
- 5-3.6000 dB  
859.000 MHz

CH2 Markers

- 1-1.6746 dB  
824.000 MHz
- 2-2.3134 dB  
849.000 MHz
- 3-50.828 dB  
863.000 MHz
- 5-18.359 dB  
859.000 MHz

22 May 2005 16:06:41

CH1 S11 L06 5 dB/REF 0 dB 21-22.958 dB 836.000 800 MHz  
 CH2 S21 L06 10 dB/REF 0 dB 21-2.3353 dB



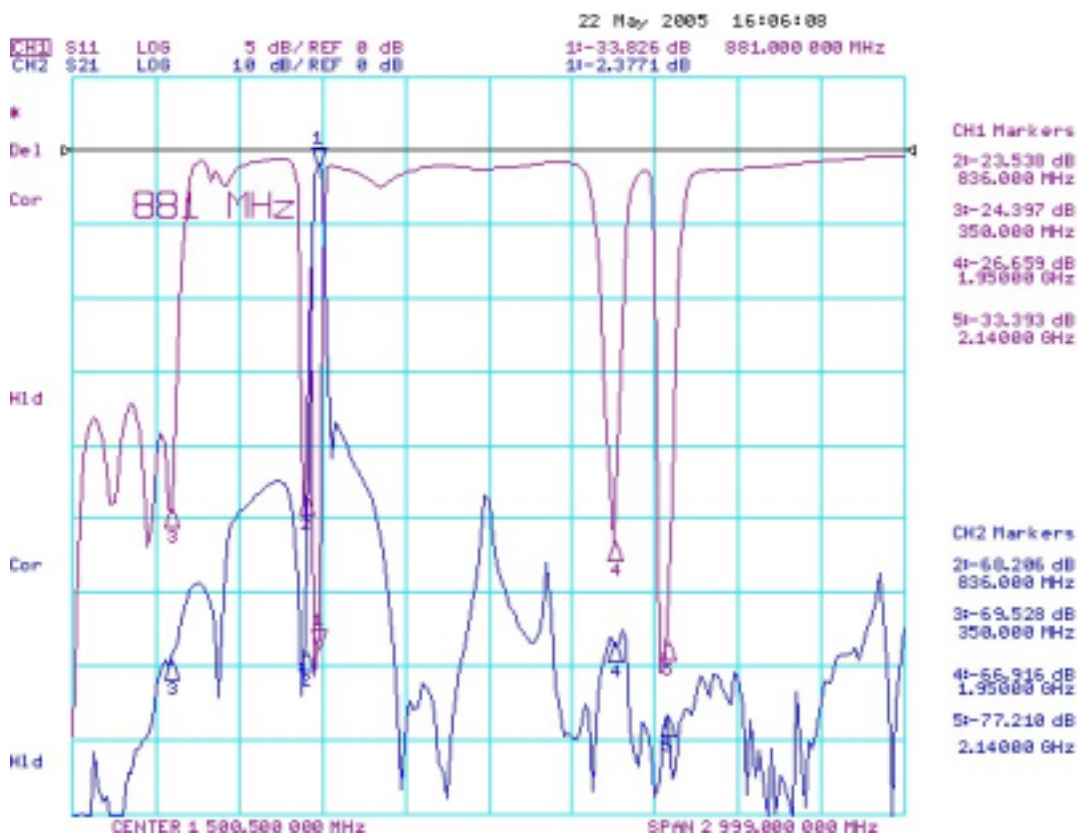
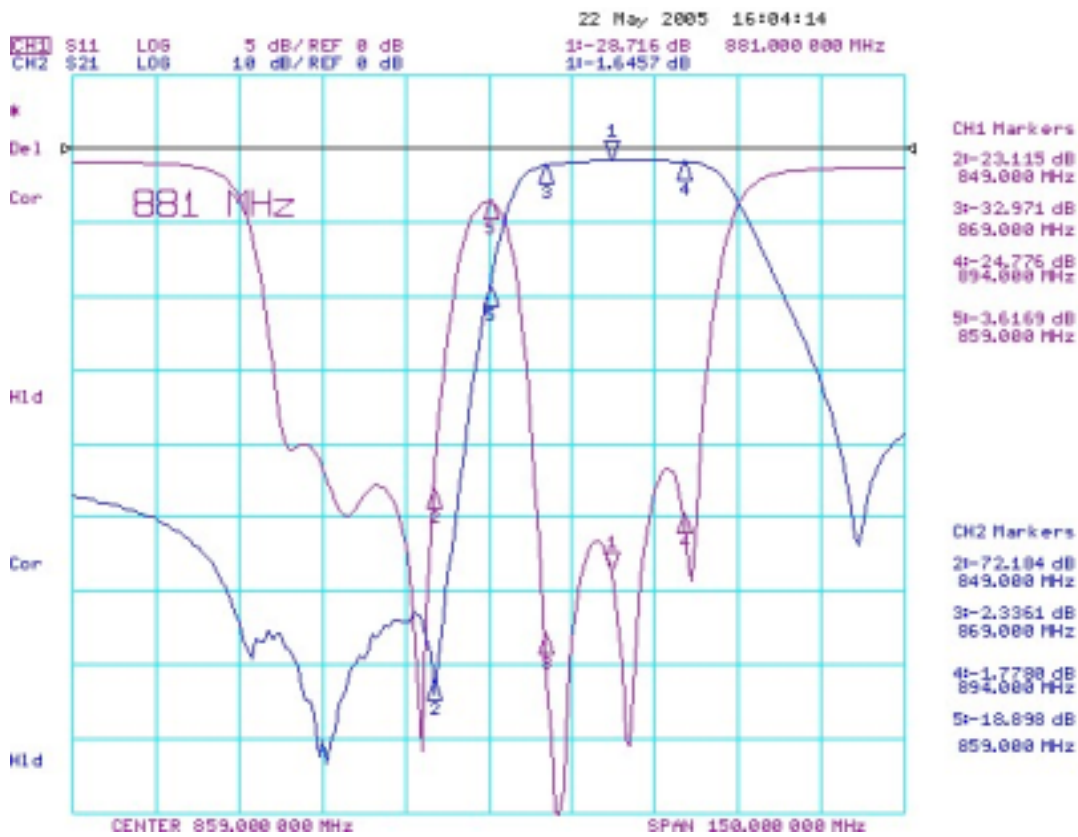
CH1 Markers

- 1-33.165 dB  
881.000 MHz
- 3-24.341 dB  
350.000 MHz
- 4-26.641 dB  
1.95000 GHz
- 5-33.441 dB  
2.14000 GHz

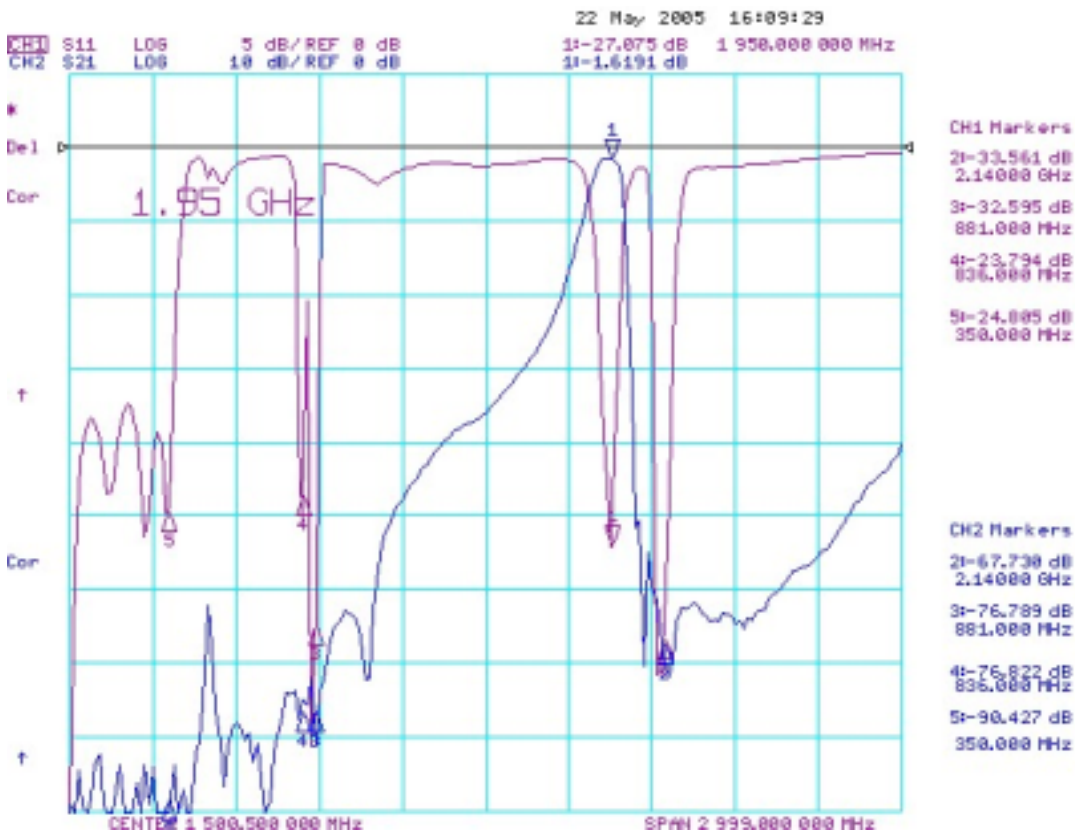
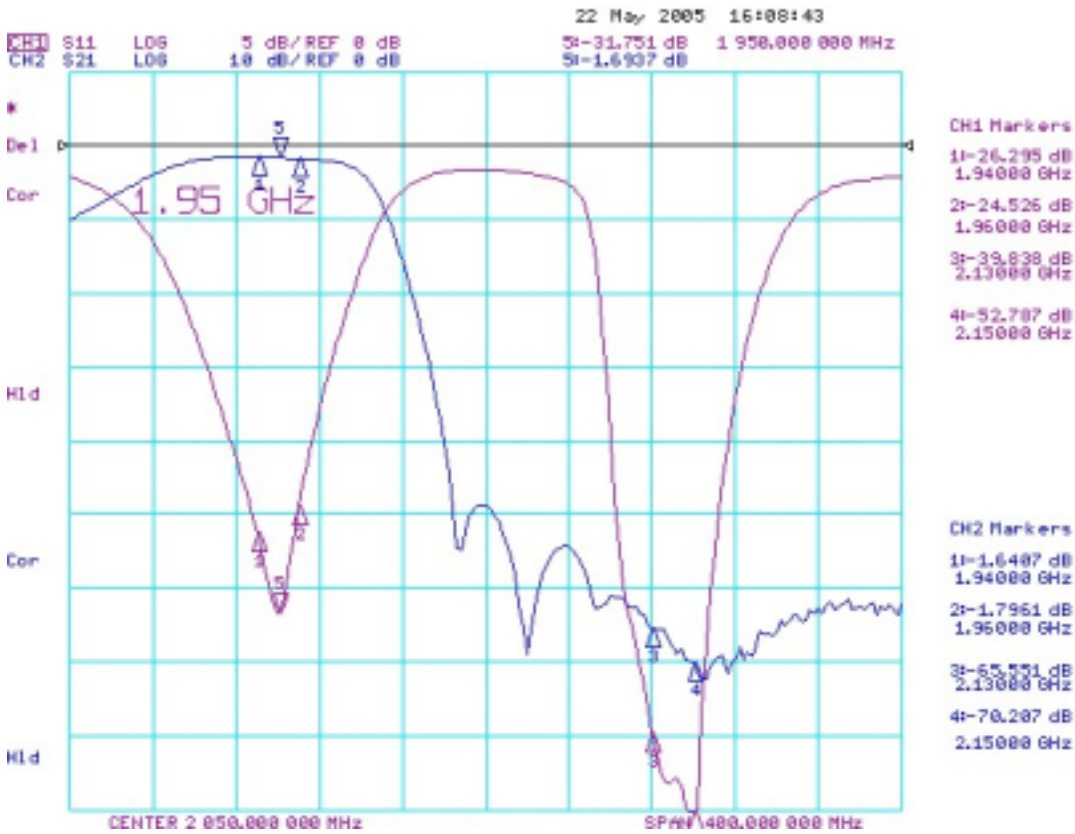
CH2 Markers

- 1-64.920 dB  
881.000 MHz
- 3-63.846 dB  
350.000 MHz
- 4-72.886 dB  
1.95000 GHz
- 5-86.508 dB  
2.14000 GHz

### 3. 881MHz



#### 4. 1950MHz





## 5. 2140MHz

