

## PRODUCT SPECIFICATION FOR INFORMATION

**CUSTOMER :**

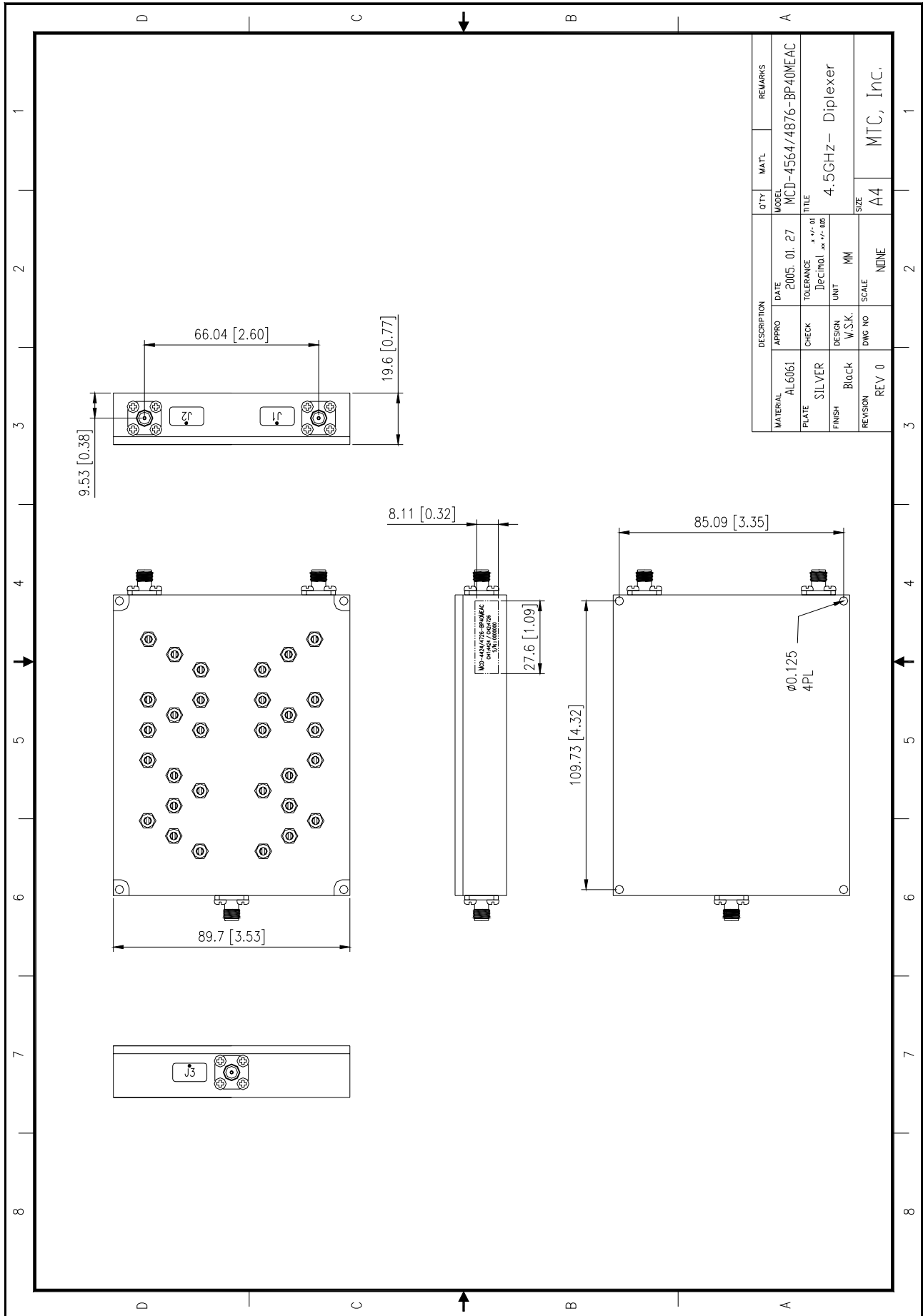
**PRODUCT NAME : CAVITY DIPLEXER TYPE**

**PART NO: MCD-4564/4876-40EAC**

1. Electrical Specifications		
	Rx	Tx
Frequency Range	4544 – 4684 MHz	4856 – 4996 MHz
Bandwidth	40 MHz	
Pass Band Insertion Loss	1.2 dB max	
-3dB Band Width	22MHz(Min)	
Pass Band Ripple	±0.25 dB max	
Pass Band Return Loss	1.4:1 max	
Out of Band Rejection	@ ±70 MHz Away from band edges Above ±100 MHz Away from band edges	60 dB min 70 dB min
Monitor Port(Rx&Tx)	-30dB±1.5dB	
Impedance	50Ω	
RF Power Capability	100 W	
Operating Temperature	-35 ~ +75	
2. Mechanical Specifications		
Connector Port	ANT, Monitor port	SMA(f)
	Rx,Tx, port	SMA(f)
Dimension(W × D × H)(Max.)		109.73 mm × 85.09 mm × 19.6 mm(W×D×H)

**NOTE:**

**Dimension : MCD-4424/4726-40EAC**



DESCRIPTION		QTY	MAT'L	REMARKS
MATERIAL	AL6061	APPRO	DATE	2005. 01. 27
MODEL	MCD-4564/4876-BP40MEAC	CHECK	TOLERANCE	$\frac{3}{100}$ OF
PLATE	SILVER	DESIGN	Deciml.	xx / x / 000
FINISH	Block	W.S.K.	UNIT	MM
REVISION	REV 0	DWG NO	SCALE	NONE
		SIZE		A4
				MTC, Inc.