

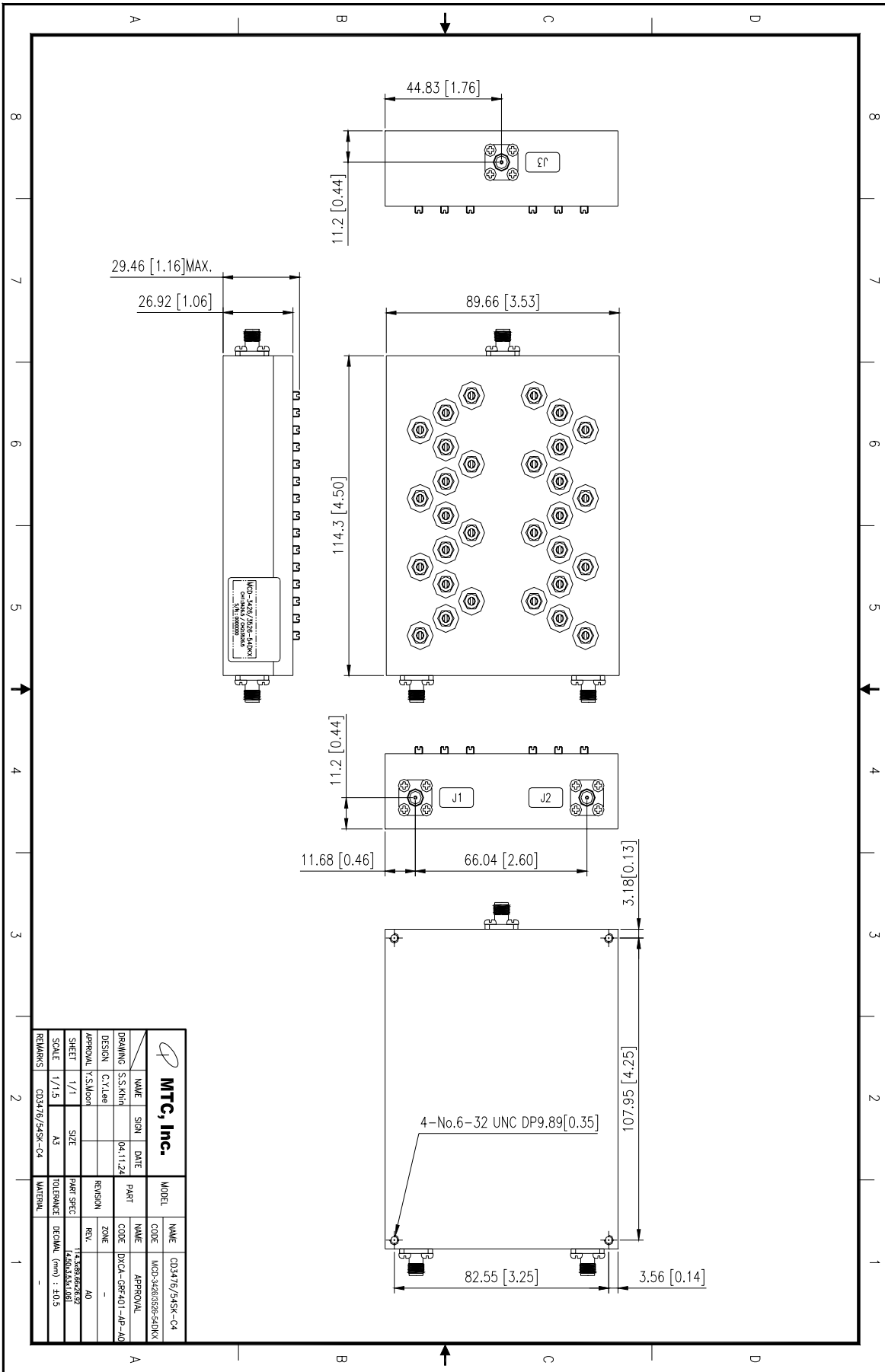
REVISED SPECIFICATION FOR INFORMATION

CUSTOMER : Microwave Solutions Inc.
PRODUCT NAME : CAVITY DUPLEXER TYPE
PROJECT : CD3476/54SK-C4
PART No. : MCD-3426/3526-54DKX

1. Electrical Specifications		
	Ch1(J1)	Ch2(J2)
Frequency Range	3399.5 MHz ~ 3453.5 MHz	3499.5 MHz ~ 3553.5 MHz
Bandwidth	54 MHz	54 MHz
Pass Band Insertion Loss	1.1 dB(Max)	1.1 dB(Max)
Pass Band Ripple	0.5dB(Max)	0.5dB(Max)
Pass Band Return Loss	1.32 : 1 (Max)	1.32 : 1 (Max)
Rejection(Min.)	60 dB (min) @ 3280 MHz 25 dB (min) @ 3353~3383.5 MHz 75 dB (min) @ 3499.5~3553.5 MHz	75 dB (min) @ 3313 MHz 10 dB (min) @ 3570 MHz 25 dB (min) @ 3583.5 MHz 75 dB (min) @ 3399.5~3453.5 MHz 65 dB (min) @ 3740 MHz 42 dB (min) @ 6999~7107 MHz 38 dB (min) @ 10498~10661 MHz
Isolation	75 dB	
Impedance	50Ω	
RF Power Capability	20 W (CW signal)	
Peak Power during 10us	100W (min)	
Operating Temperature	-40 ~ +85	
2. Mechanical Specifications		
Connector Port	J1 port	SMA(f)
	J2, J3 port	SMA(f)
Dimension(W × D × H)(Max.)		4.50 " × 3.53 " × 1.15 " (W×D×H)

NOTE:

EQUIPMENT used : HP 8753E



MTC, Inc.		MODEL	NAME
DRWING	S.S.MH	CODE	MCP-3426/526+54DCK
DESIGN	C.Y.Lee	PART	CD3476/54SK-C4
APPROVAL	K.S.Moore	REVISION	
SHEET	1/1	SIZE	A3
SCALE	1/1.5	PART SPEC	14.2086666666667 14.8024444444444
REMARKS	CD3476/54SK-C4	TOLERANCE	DECIMAL (mm) : 40.5
		MATERIAL	-

MTC, Inc.